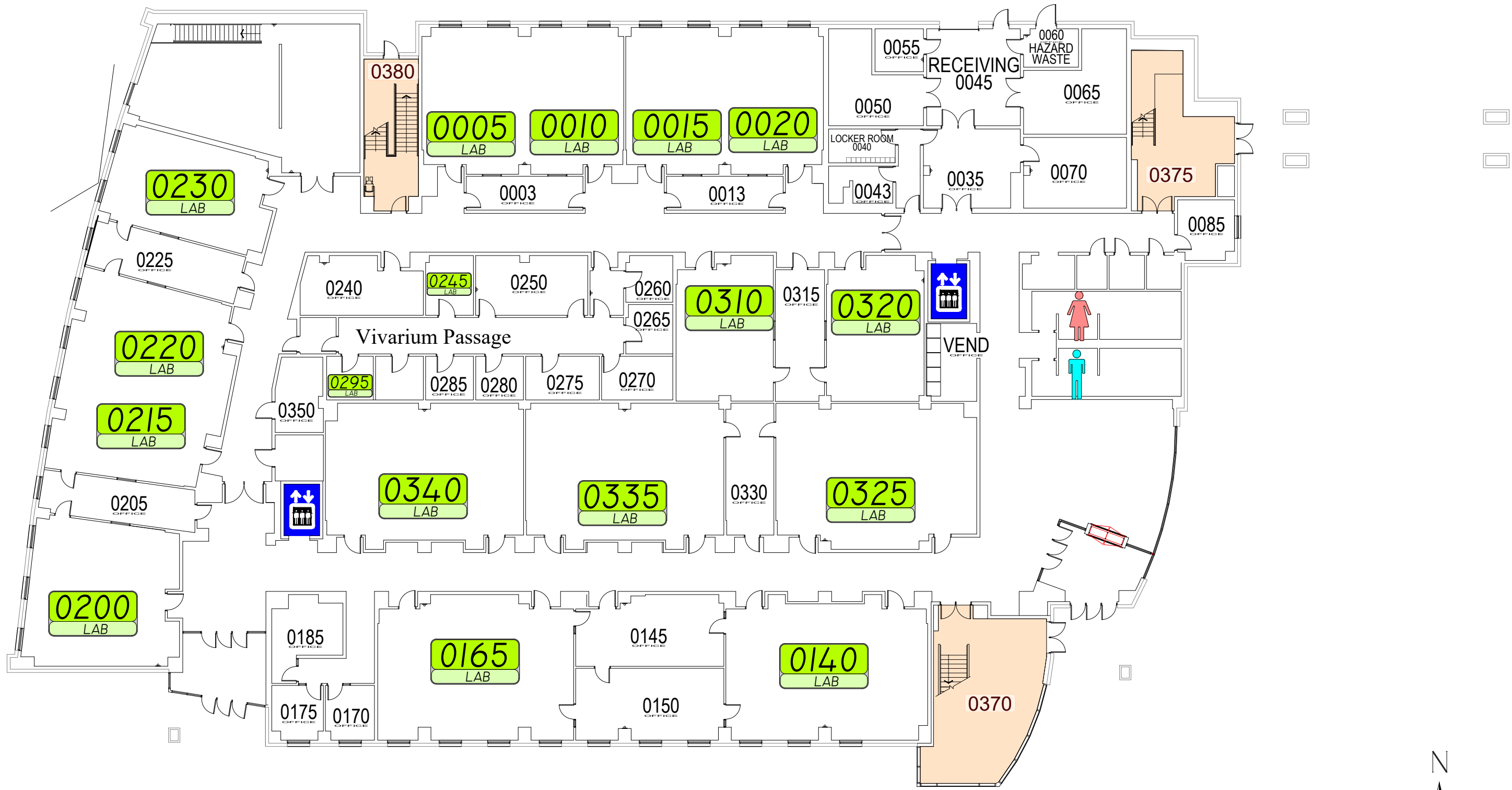
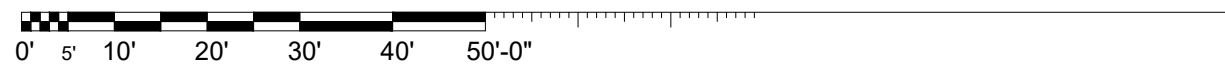


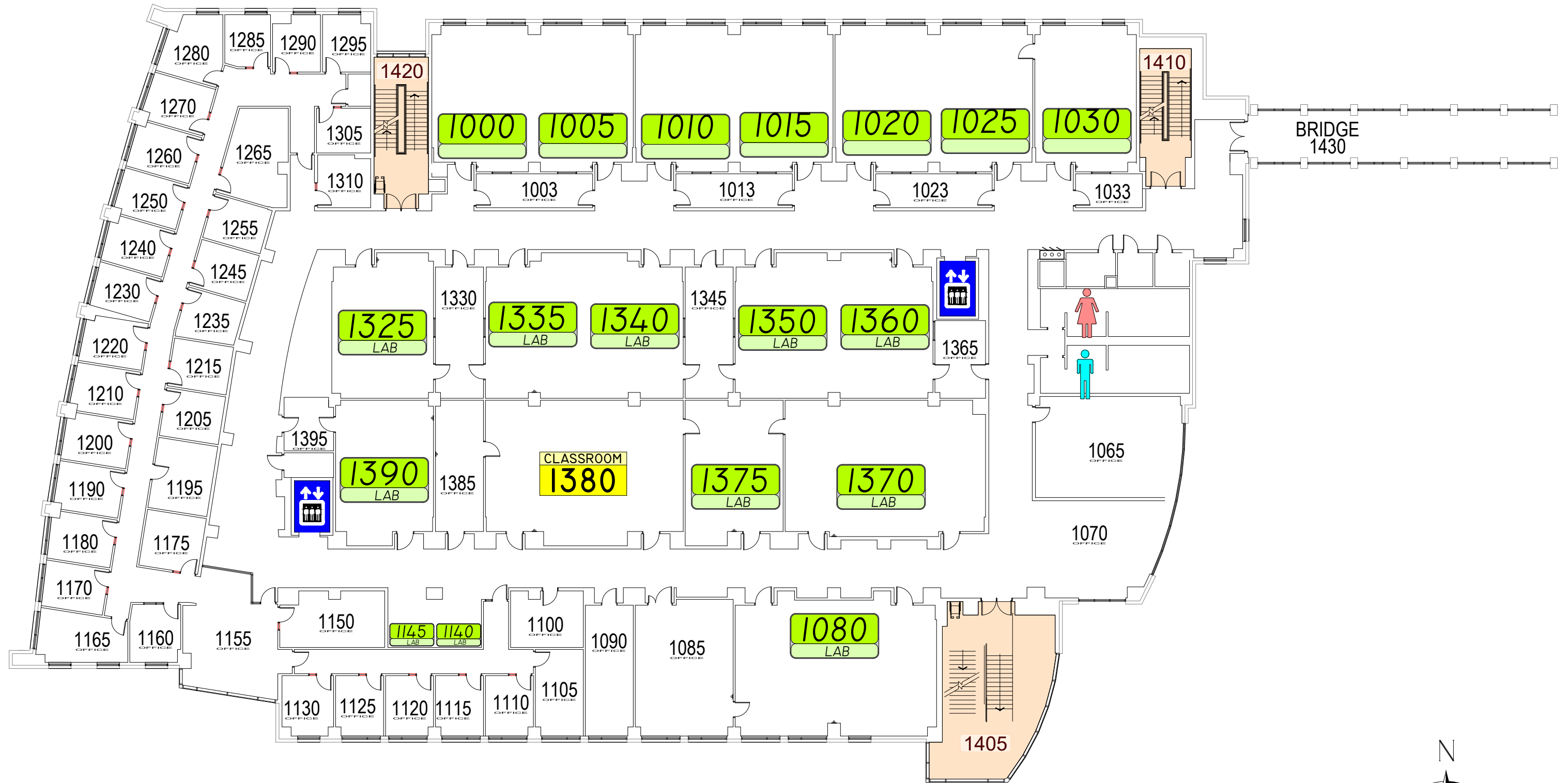
Science Lab Building West



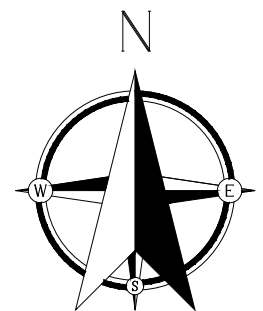
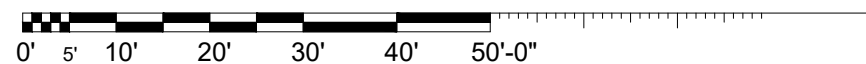
LOWER LEVEL



Science Lab Building West



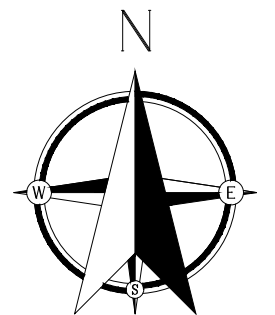
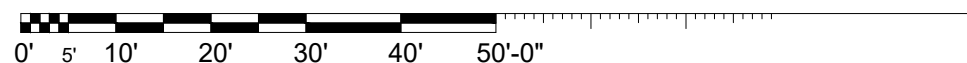
1st FLOOR



Science Lab Building West



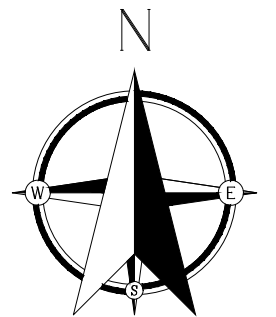
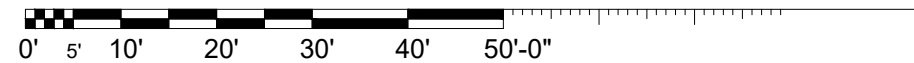
2nd FLOOR



Science Lab Building West



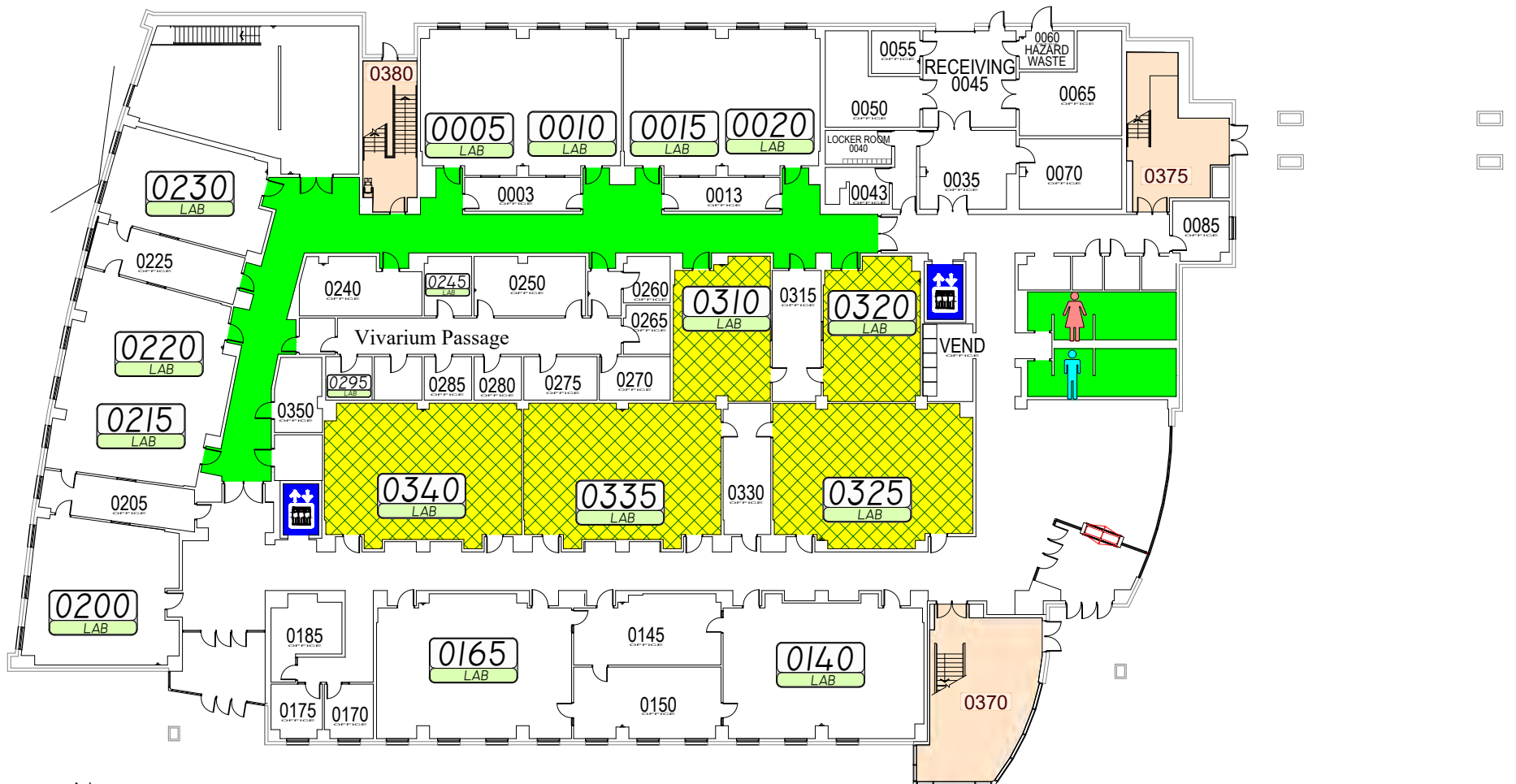
3rd FLOOR



EMERGENCY STORM SHELTERS

In event of a Tornado Warning everyone should go to a Lower Level **Primary Storm Shelter**

In event you can not get to a Primary Shelter go to a **Secondary Storm Shelter**



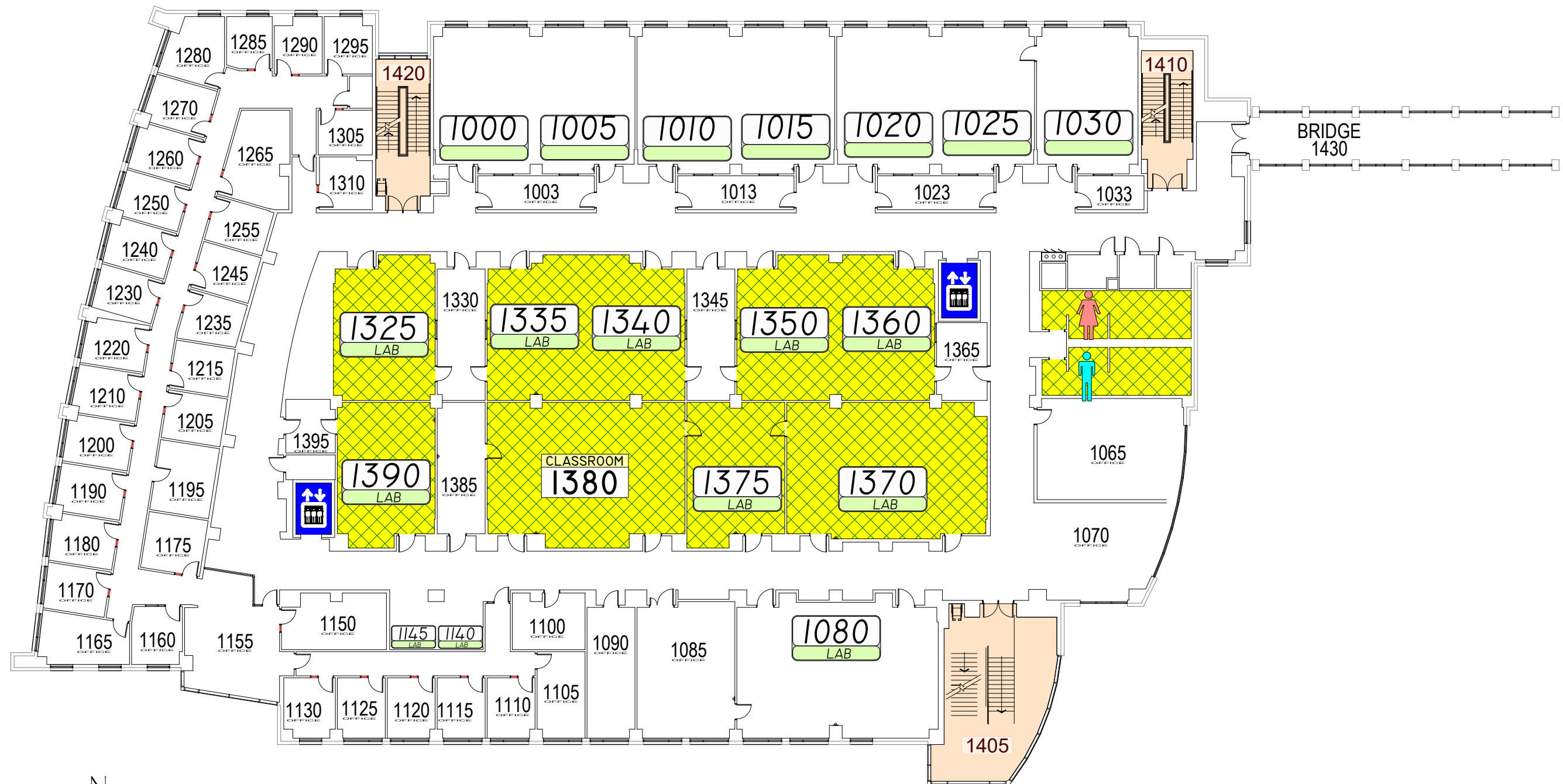
LOWER LEVEL

Science Lab Building West

EMERGENCY STORM SHELTERS

In event of a Tornado Warning everyone should go to a Lower Level **Primary Storm Shelter**

In event you can not get to a Primary Shelter go to a **Secondary Storm Shelter**



1st FLOOR

Science Lab Building West

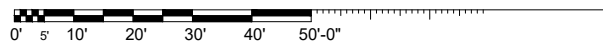
EMERGENCY STORM SHELTERS

In event of a Tornado Warning everyone should go to a Lower Level **Primary Storm Shelter**

In event you can not get to a Primary Shelter go to a **Secondary Storm Shelter**



2nd FLOOR Science Lab Building West



EMERGENCY STORM SHELTERS

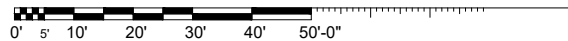
In event of a Tornado Warning everyone should go to a Lower Level **Primary Storm Shelter**

In event you can not get to a Primary Shelter go to a **Secondary Storm Shelter**



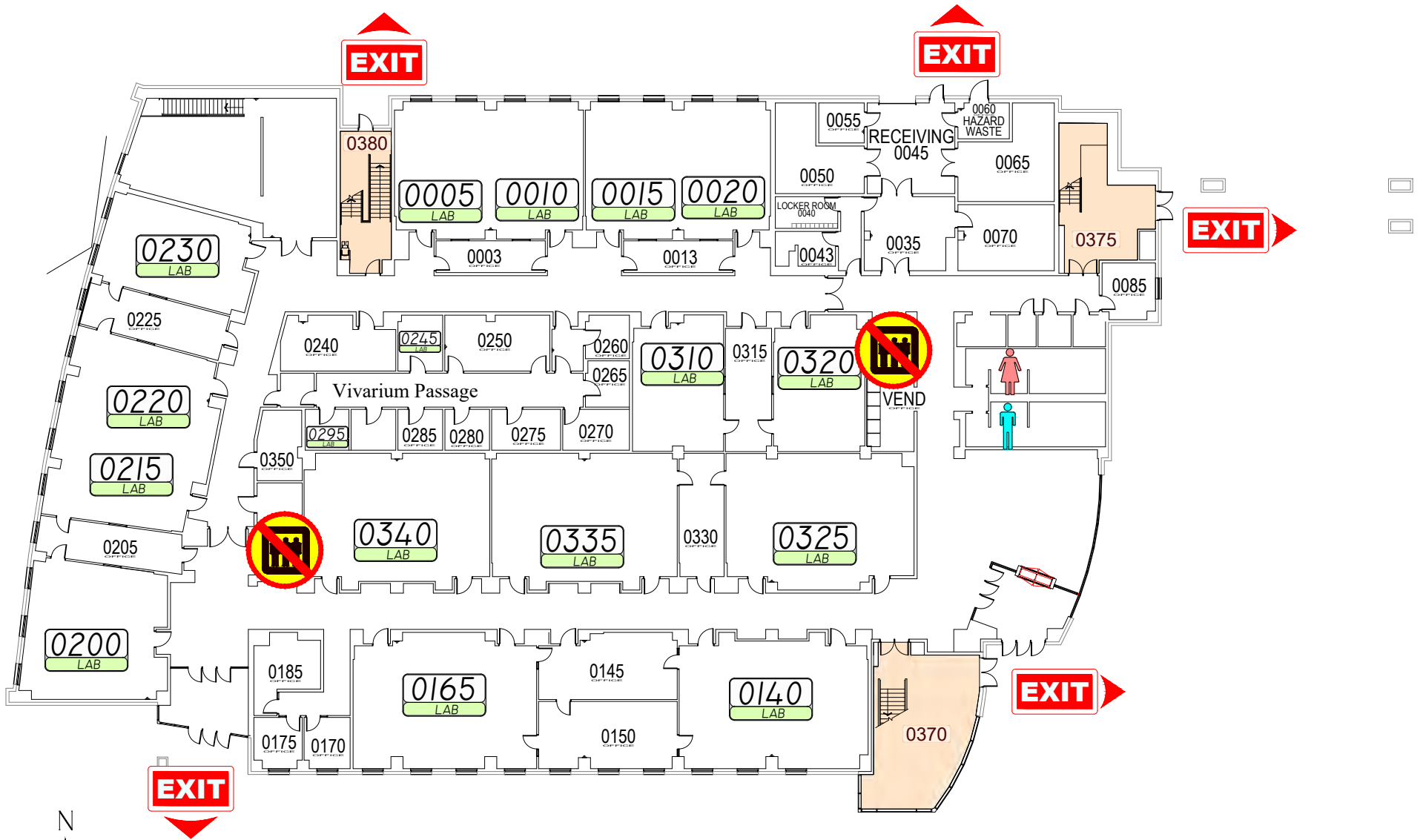
3rd FLOOR

Science Lab Building West



EMERGENCY EXIT PLAN

EXIT IN CASE OF EMERGENCY USE MARKED EXITS **EXIT**



LOWER LEVEL



0' 5' 10' 20' 30' 40' 50'-0"

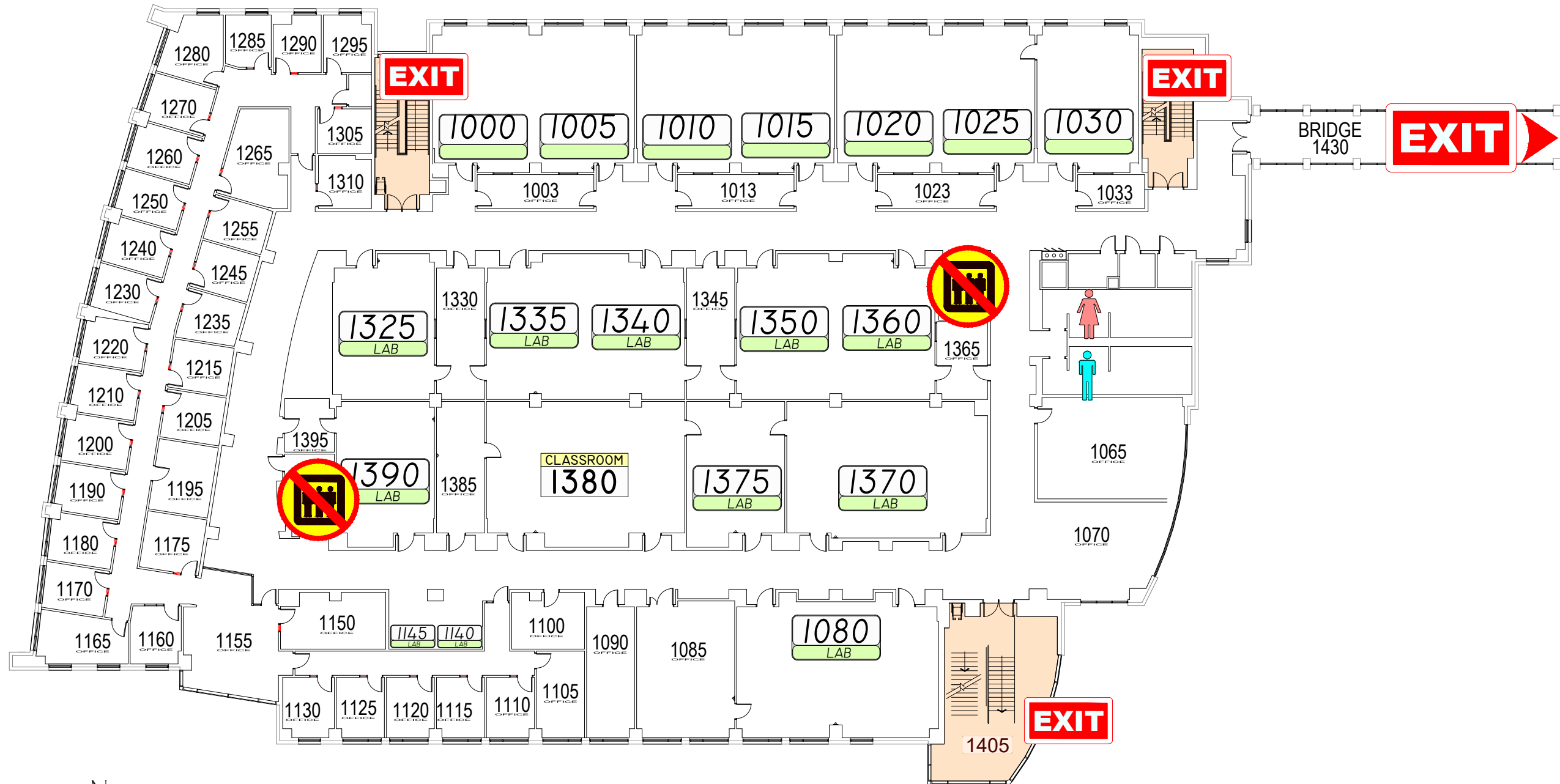
EMERGENCY EXIT PLAN

EXIT IN CASE OF EMERGENCY USE MARKED EXITS **EXIT**

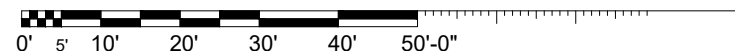
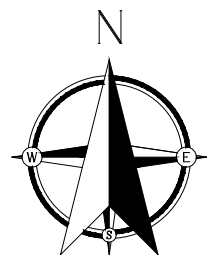
 IN CASE OF FIRE DO NOT USE ELEVATORS 

 USE STAIRWAYS 

 WHEELCHAIR USERS ARE TO GO INTO THE STAIR WELLS **EXIT** AND WAIT FOR EMERGENCY PERSONNEL. 



1st FLOOR



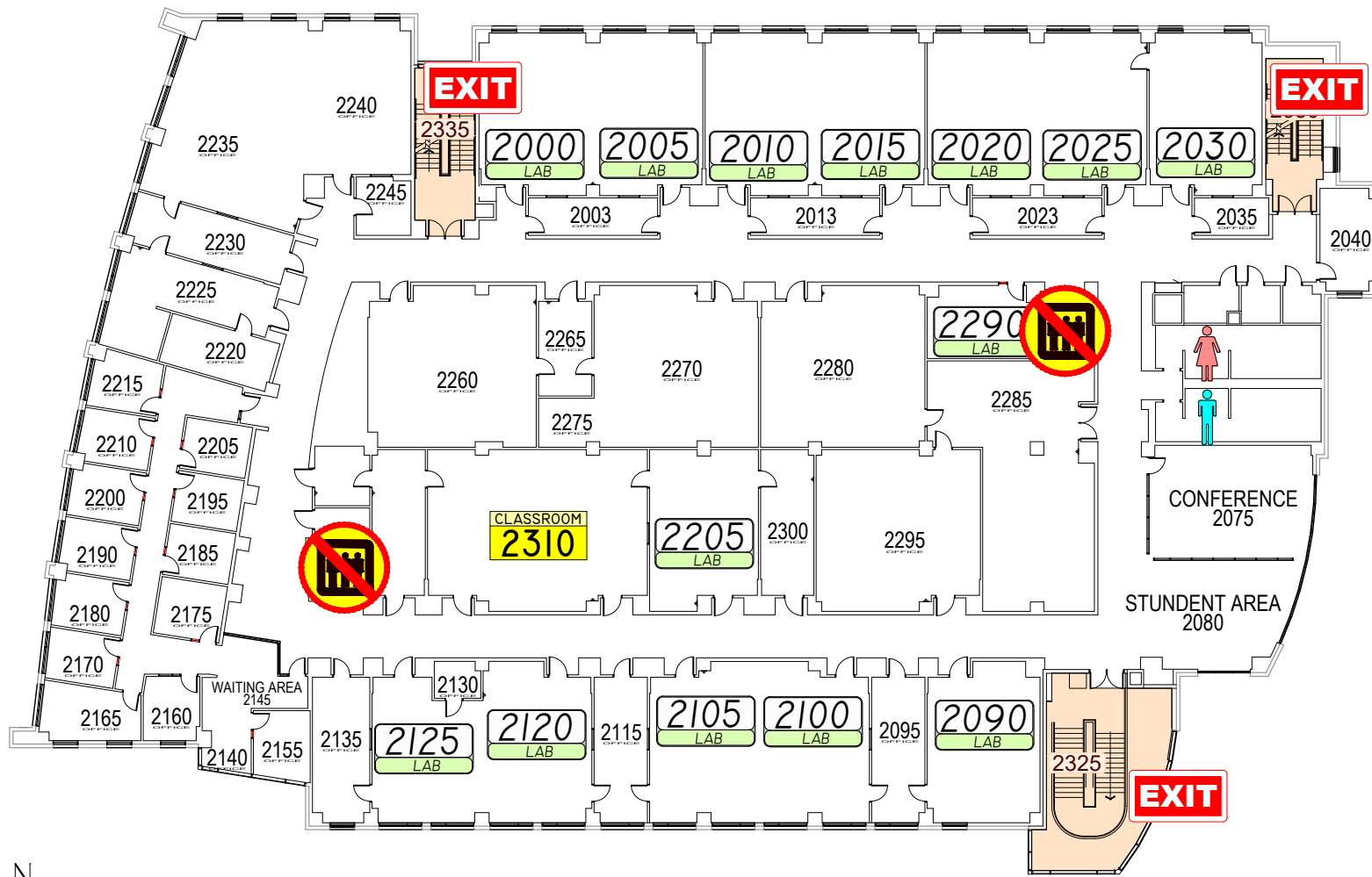
EMERGENCY EXIT PLAN

EXIT IN CASE OF EMERGENCY USE MARKED EXITS **EXIT**

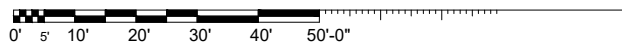
 IN CASE OF FIRE DO NOT USE ELEVATORS 

 USE STAIRWAYS 

 WHEELCHAIR USERS ARE TO GO INTO THE STAIR WELLS **EXIT** AND WAIT FOR EMERGENCY PERSONNEL. 



2nd FLOOR



EMERGENCY EXIT PLAN

EXIT IN CASE OF EMERGENCY USE MARKED EXITS **EXIT**

 IN CASE OF FIRE DO NOT USE ELEVATORS 

 USE STAIRWAYS 

 WHEELCHAIR USERS ARE TO GO INTO THE STAIR WELLS **EXIT** AND WAIT FOR EMERGENCY PERSONNEL. 



3rd FLOOR

