

BUILDING A

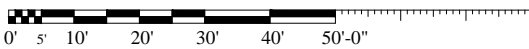
Classroom Building

1st FLOOR

Additional Maps & Floor Plans
@ <http://www.sue.edu/facilities/eguide/>

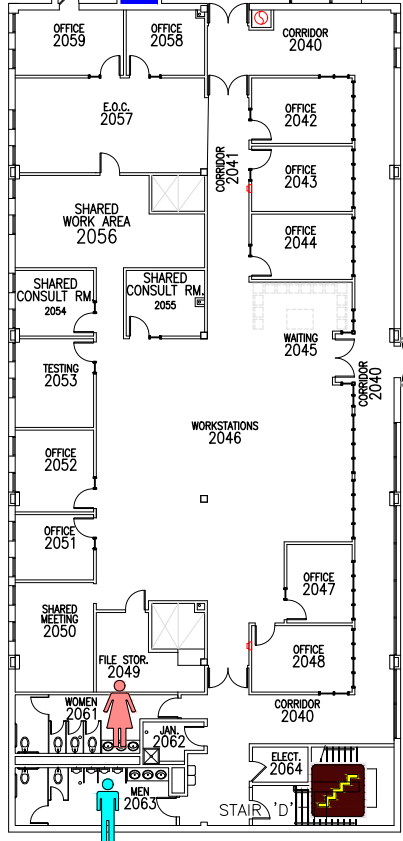


BUILDING A



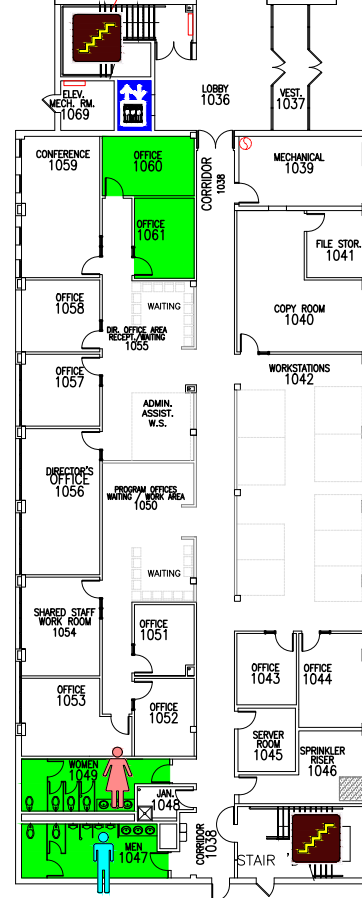
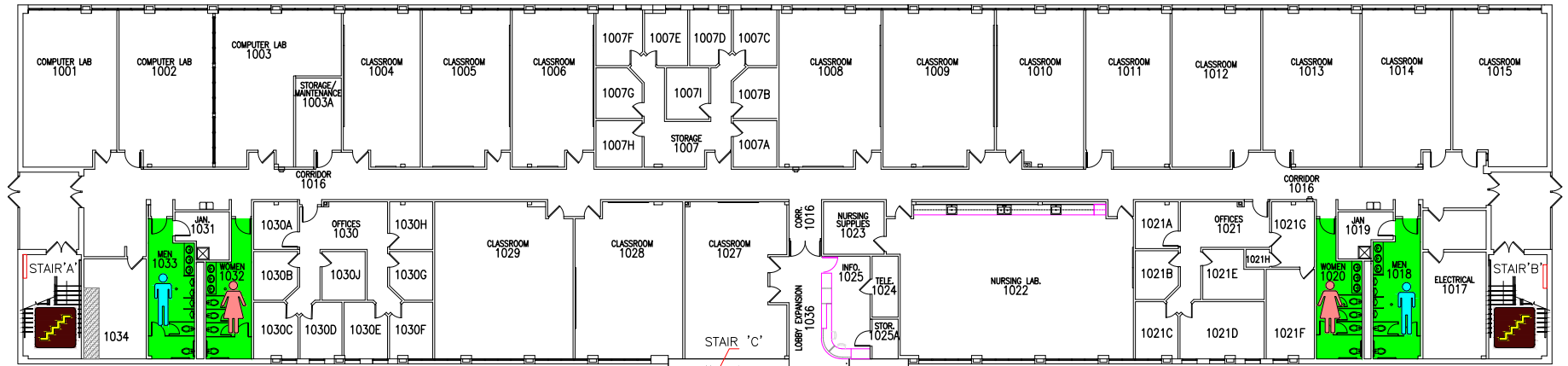
Classroom Building 2nd FLOOR

Additional Maps & Floor Plans
@ <http://www.siu.edu/facilities/eguide/>

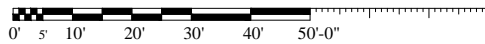


EMERGENCY STORM SHELTERS

In event of a Tornado Warning everyone should go to a **PRIMARY SHELTER**



BUILDING A

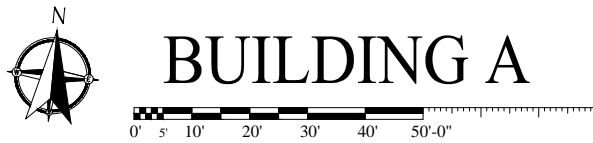


Classroom Building 1st FLOOR

EMERGENCY STORM SHELTERS

In event of a Tornado Warning everyone should go to a 1st Floor **PRIMARY SHELTER**

In event you can not get to a Primary Shelter go to a **SECONDARY STORM SHELTER**



Classroom Building
2nd FLOOR

EMERGENCY EXIT PLAN

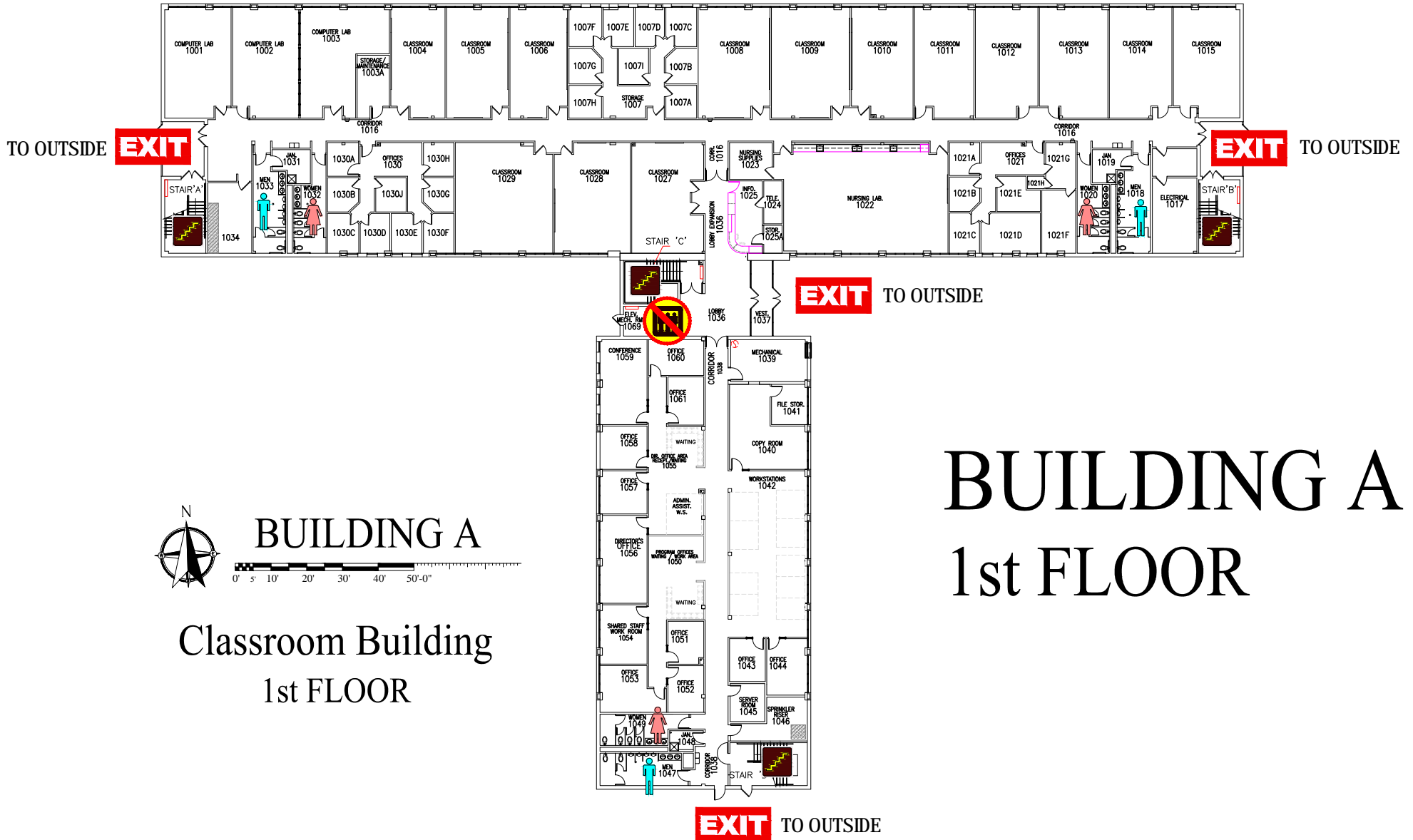
EXIT

IN CASE OF EMERGENCY USE MARKED EXITS

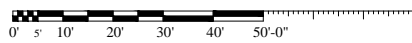
EXIT



DO NOT USE ELEVATORS



BUILDING A

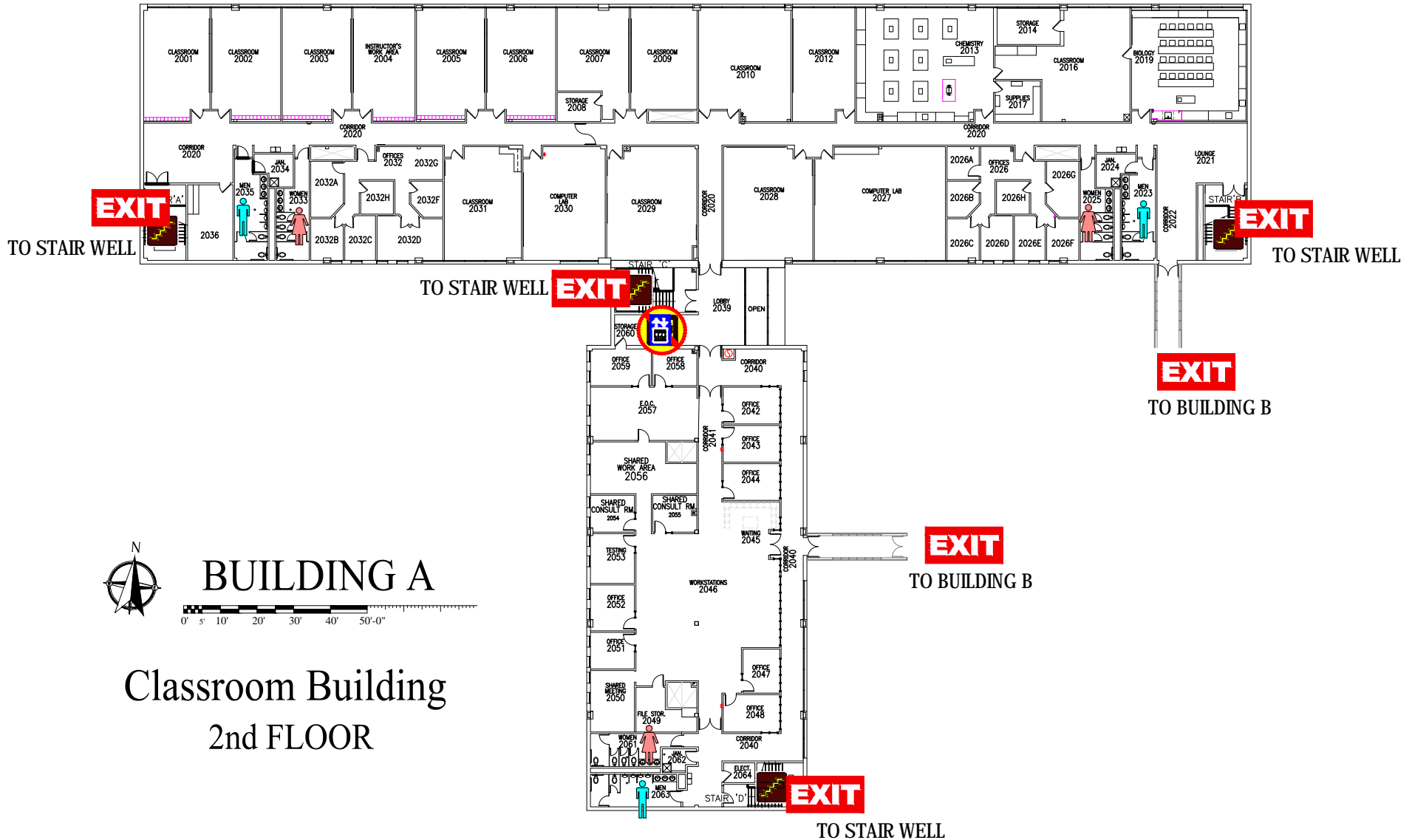


Classroom Building
1st FLOOR

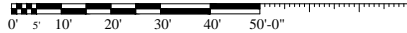
BUILDING A
1st FLOOR

EXIT TO OUTSIDE

EMERGENCY EXIT PLAN



BUILDING A



Classroom Building
2nd FLOOR

EXIT IN CASE OF EMERGENCY USE MARKED EXITS **EXIT**

DO NOT USE ELEVATORS

WHEELCHAIR USERS ARE TO GO TO A **EXIT** OR INTO THE STAIR WELLS **EXIT** AND WAIT FOR EMERGENCY PERSONNEL

TO BUILDING B

TO STAIR WELL